



Westminster Place

York's premier business location
SatNav Ref: YO26 6RW



“A digital city with a rich history.”

Connect with York's digital highway...

An ideally located business hub, a place for businesses to connect and grow.

Westminster Place offers a unique environment from which to expand your business within a city thriving on a well invested digital infrastructure. There has never been a better time to connect with the city's business network and be part of a growing economy.

York's educational institutions such as The University of York, with its world-leading computer science department, contribute to the city's rich source of highly-skilled local talent, creating opportunities for local businesses to connect with local people.



Ideally located for business growth...

York, a cathedral city well known for its rich history, has rapidly emerged as a prime location for business growth.

Underneath York's famous cobbled streets lies a high-speed fibre optic data network, an infrastructure which has seen the city become recognised as a centre for digital creativity. Significant investment from the City of York Council has helped position York as a remarkably forward-thinking city, providing a high-tech environment from which both established and start-up businesses can thrive.

Located on the outskirts of the city with immediate access to the A1237 North York Ring Road, and within 15 minutes drive of the A1(M), Westminster Place benefits from a well connected business park position providing room for fast-growing firms to expand.

Established as one of York's most sought after business locations, York Business Park is home to a range of amenities such as Bannatyne's Health Club, Premier Inn, the Millfield Beefeater, and Maxis restaurants, and a petrol station with Co-op food store. Occupiers are also well connected to the city centre, with the nearby Park and Ride service providing excellent commuter access to the city's major shopping districts and railway station. York benefits from regular direct rail services to London, with a fastest journey time to London (Kings Cross) of approximately 1 hour and 45 minutes.

Westminster Place is also in close proximity to the popular out-of-town retail parks of Clifton Moor, Monks Cross, and the recently built Vangarde Shopping Park, with a number of major national occupiers including Marks & Spencer, John Lewis, Tesco, Next, Sainsbury's, Topshop, Debenhams and Harveys.

1. York Railway Station - 15 mins drive
2. John Lewis, Vangarde Shopping Park - 10 mins drive
3. York City Centre - 15 mins drive
4. On-site Café amenities





Introducing Westminster Place...

Built to a high specification and situated in attractive landscaped grounds, Westminster Place offers flexible office accommodation promoting maximum value and minimum stress.

The site comprises a modern estate of 3 detached office buildings and a centrally located café providing an informal venue for clients and colleagues to liaise. An onsite building manager provides help and support during core business hours. The office units benefit from passenger lifts to all floors and there is excellent secure on-site parking.



Built for business...

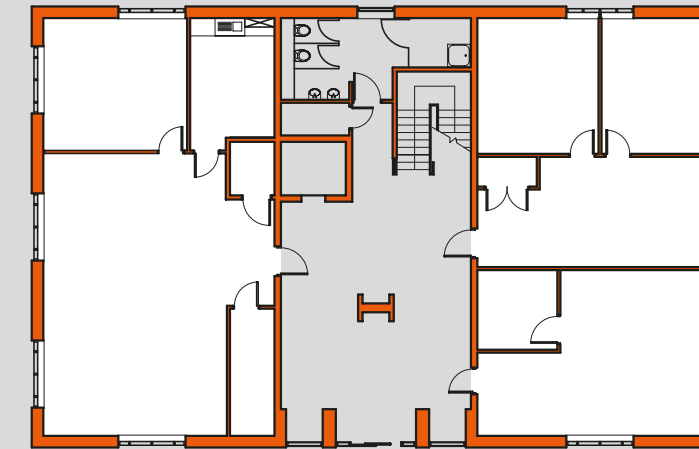
Accommodation at Westminster Place is arranged over 3 high specification office buildings each comprising 4 floors.

The units benefit from the following features:

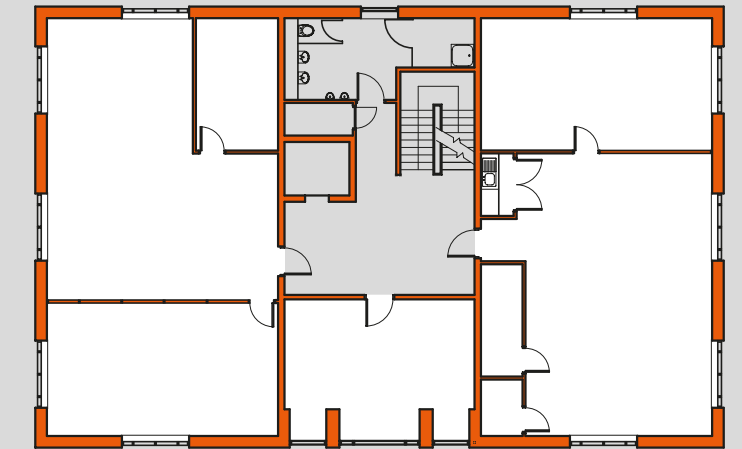
- Central heating in all suites
- air conditioning in some suites
- Full raised floors throughout
- Suspended ceilings incorporating VDU lighting
- Fully integrated kitchens
- High quality WC's on each floor
- Lift access to all floors
- Secure environment with 24/7 CCTV and alarm systems
- Excellent car parking ratios
- Well managed estate in a highly landscaped setting
- Onsite building manager

Kensington House

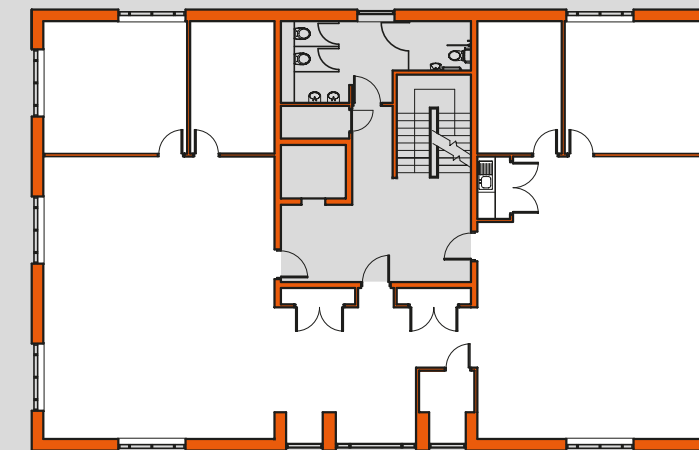
Ground Floor:



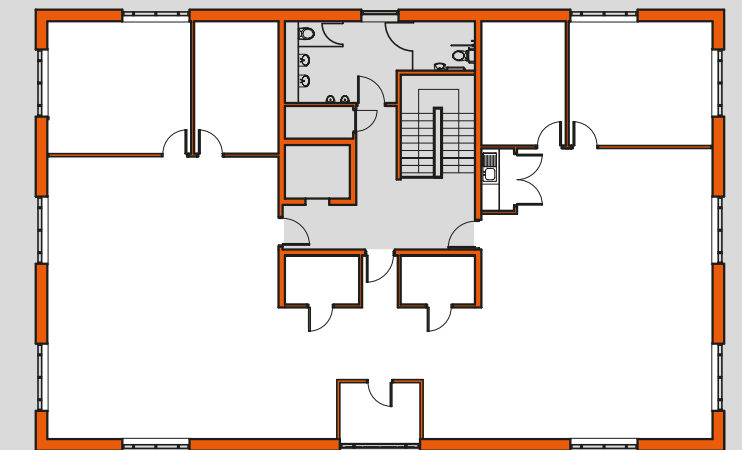
First Floor:



Second Floor:



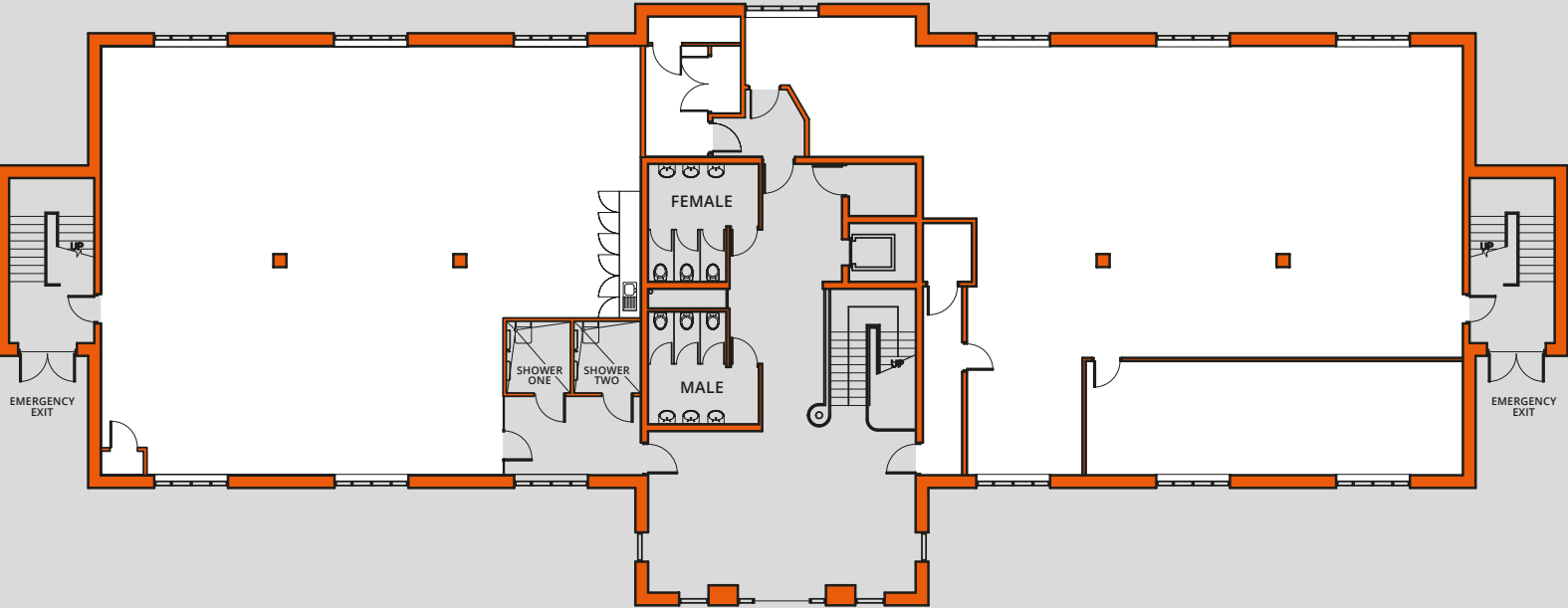
Third Floor:



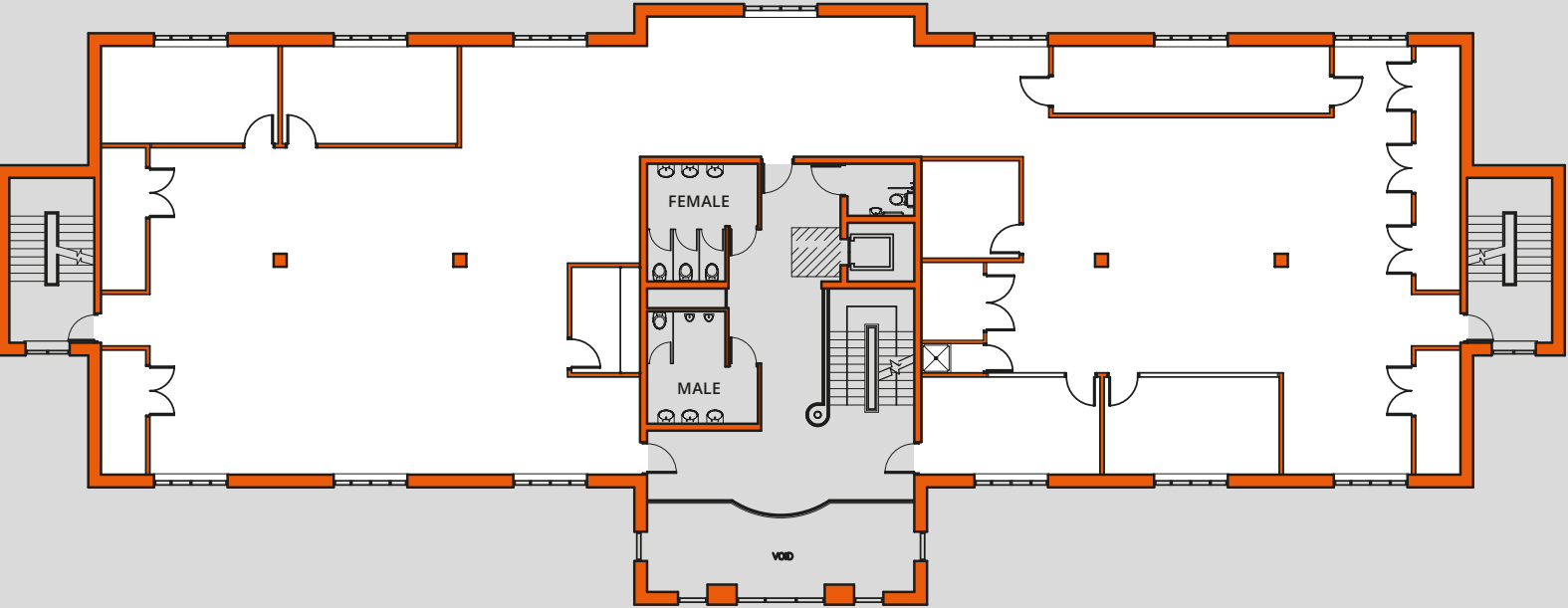
Contact the agents for current availability.

Regency House

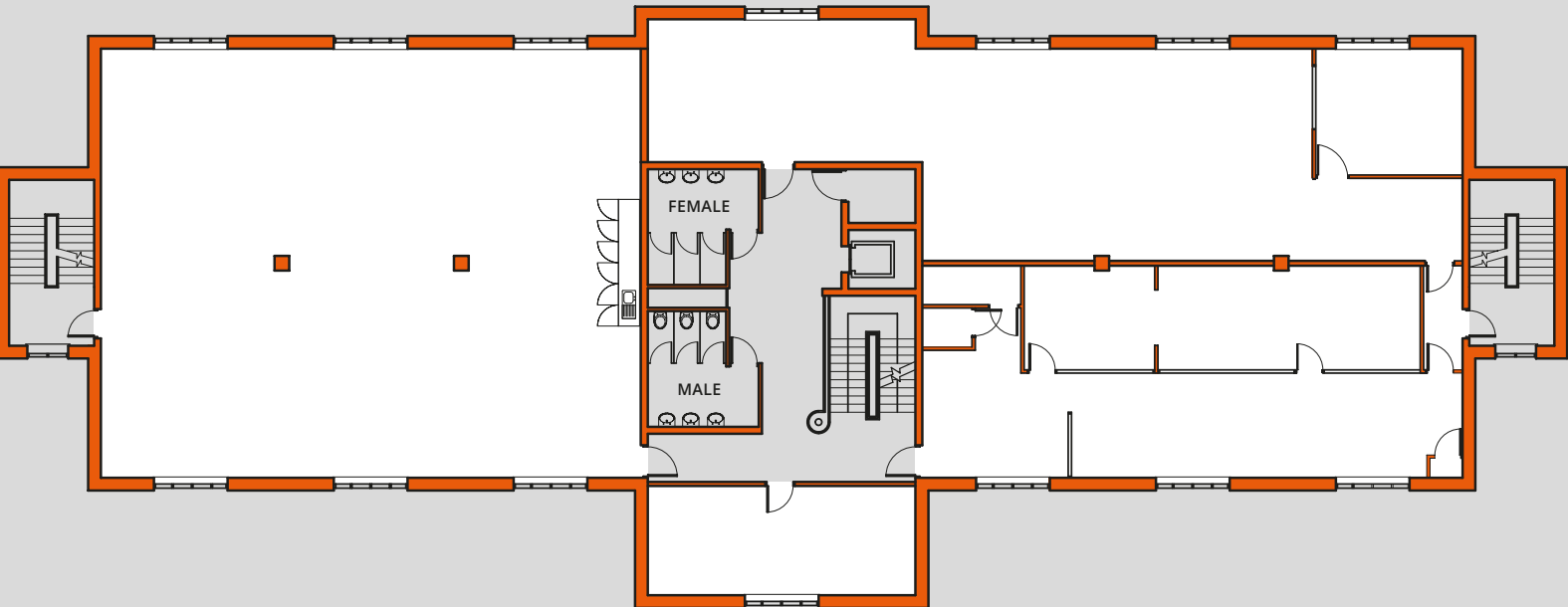
Ground Floor:



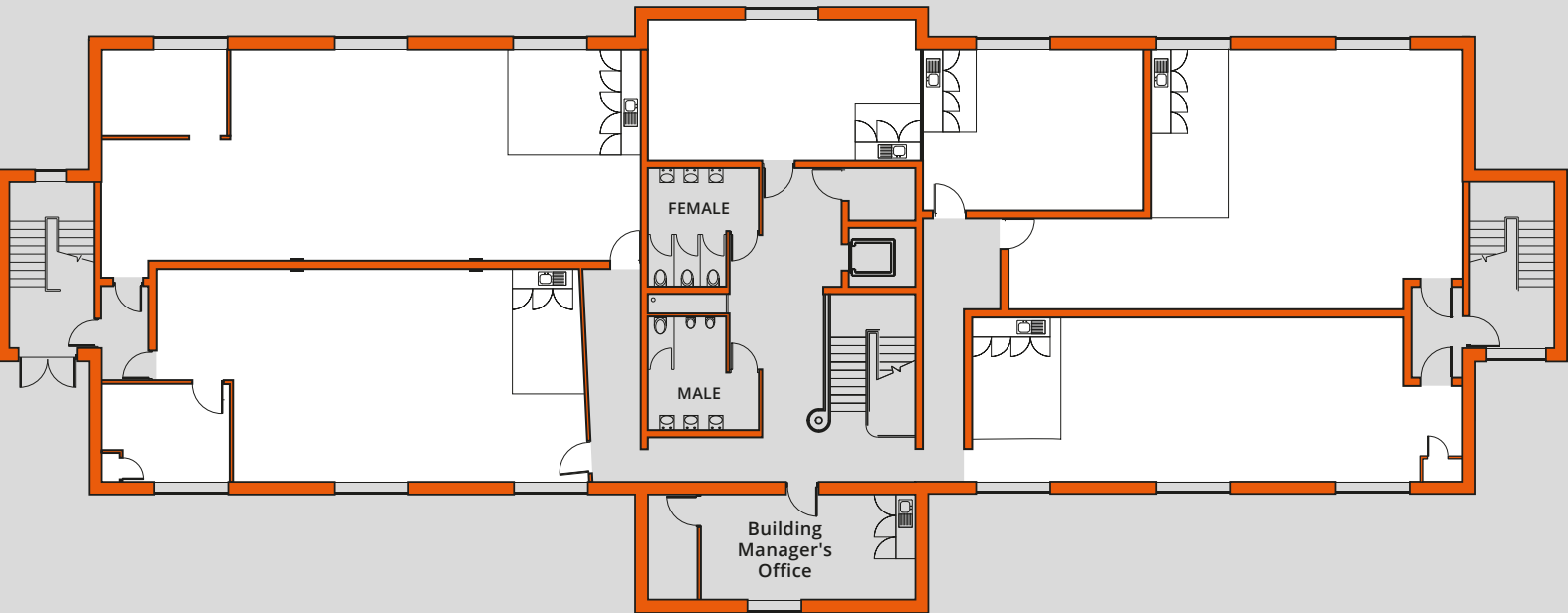
First Floor:



Second Floor:



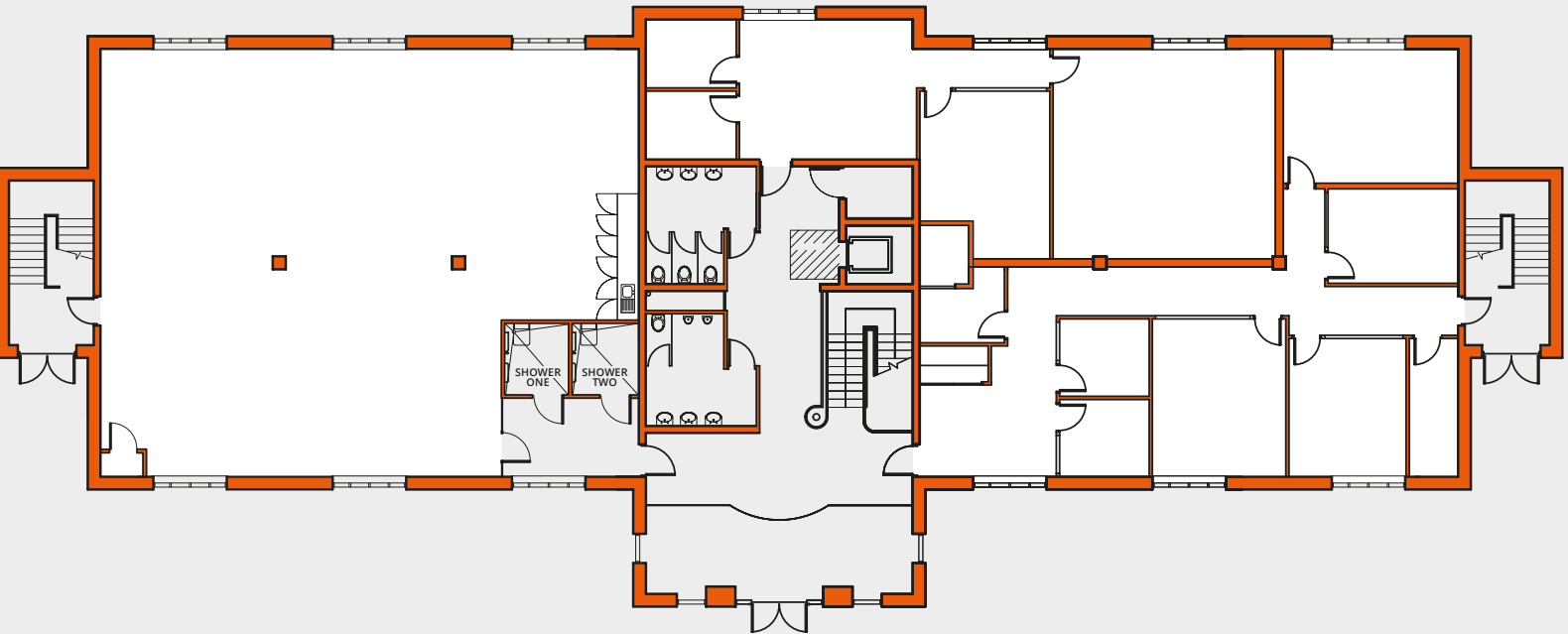
Third Floor:



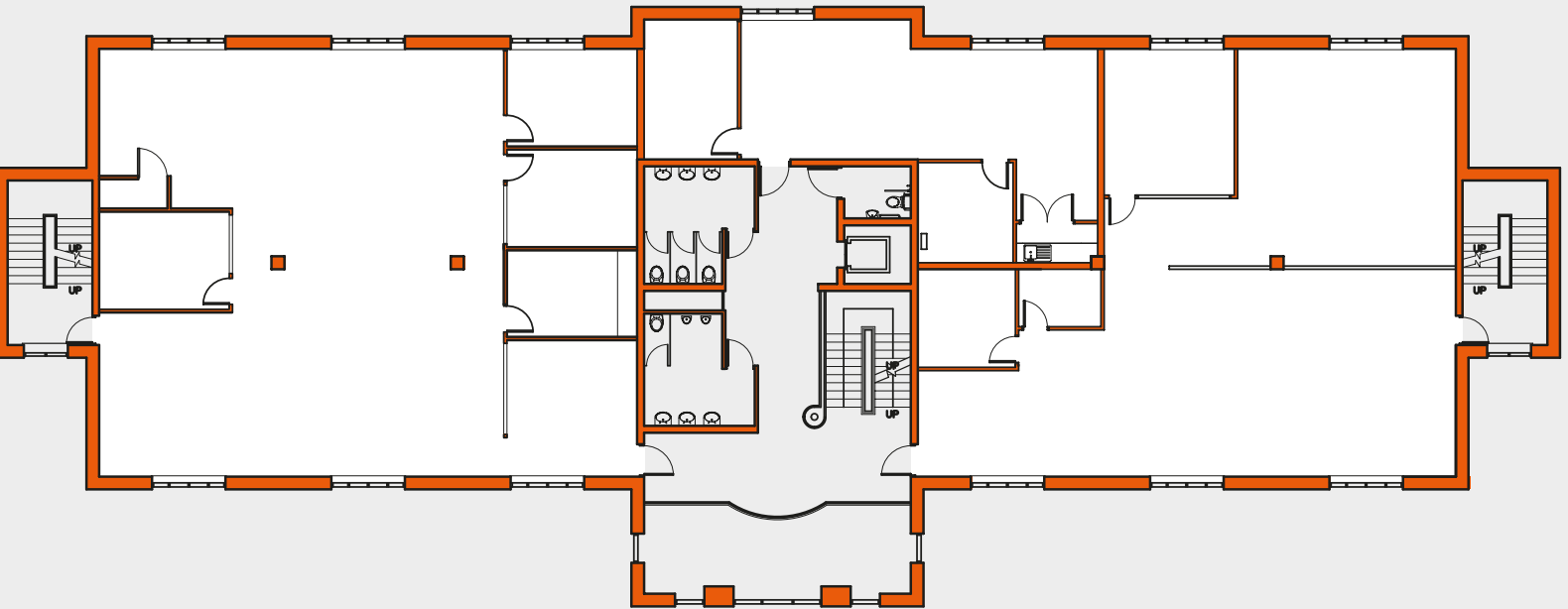
Contact the agents for current availability.

Marlborough House

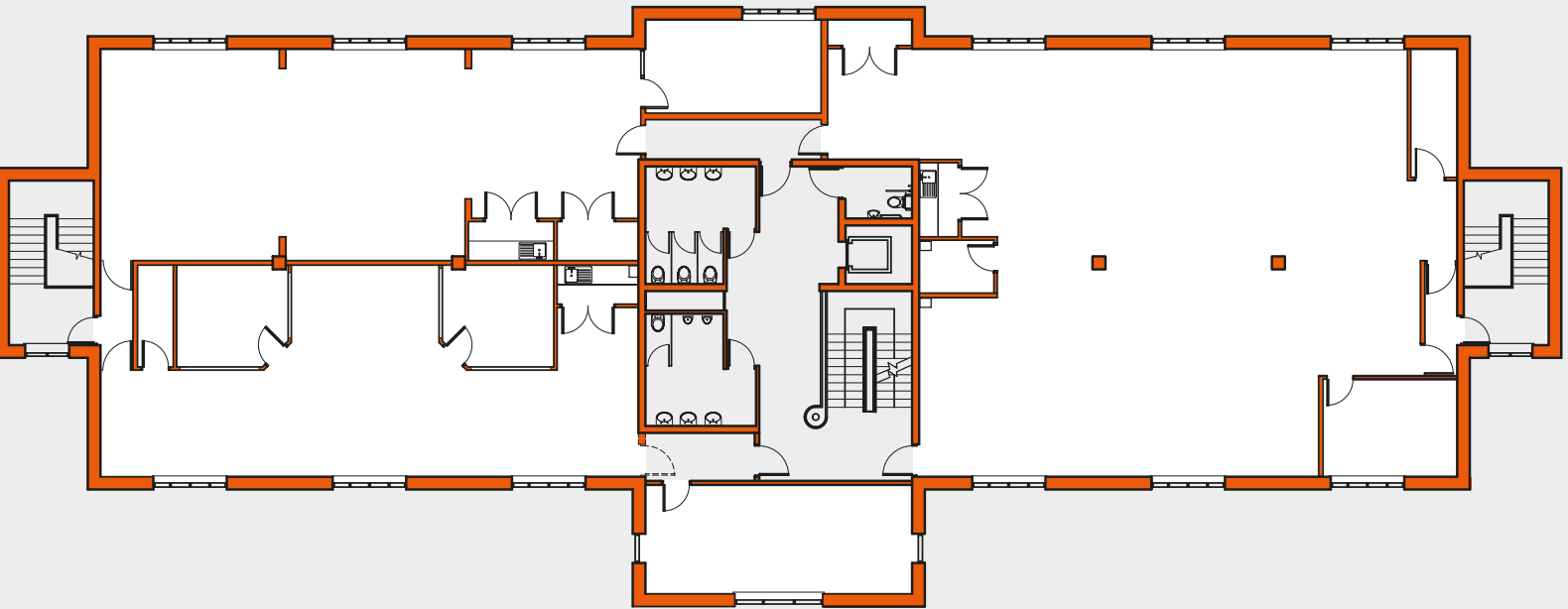
Ground Floor:



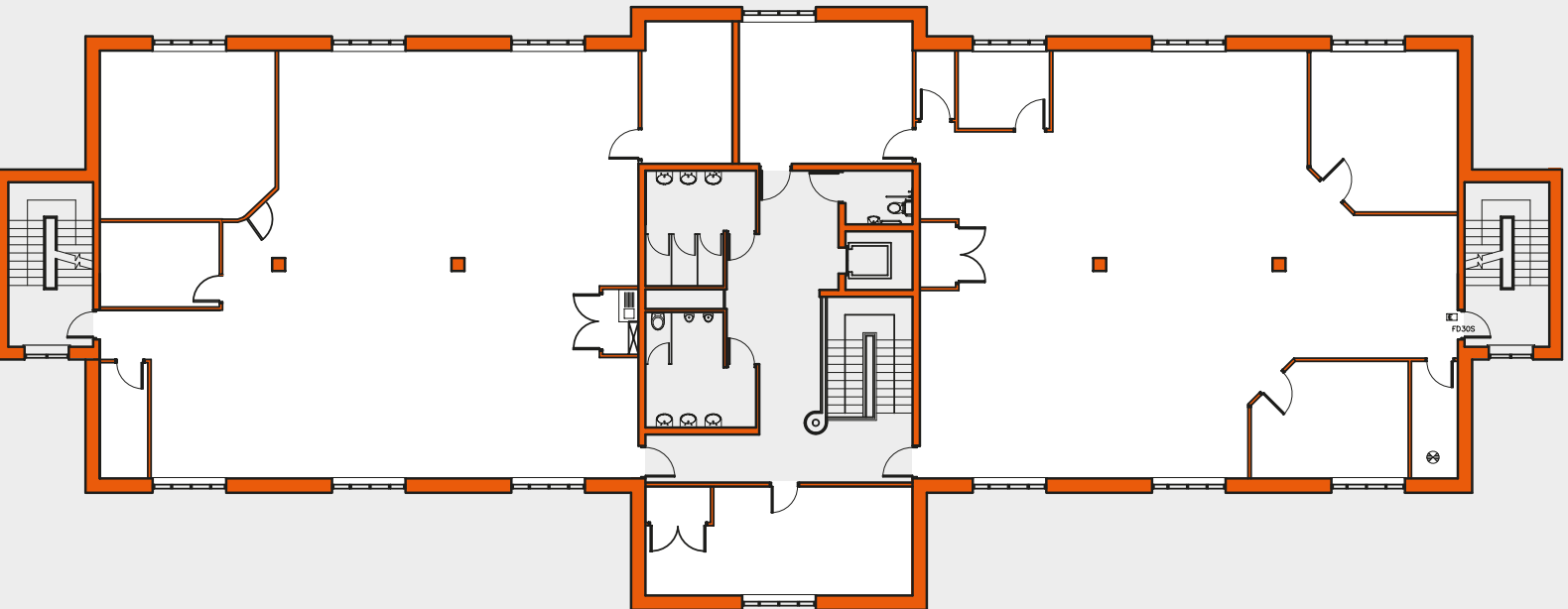
First Floor:



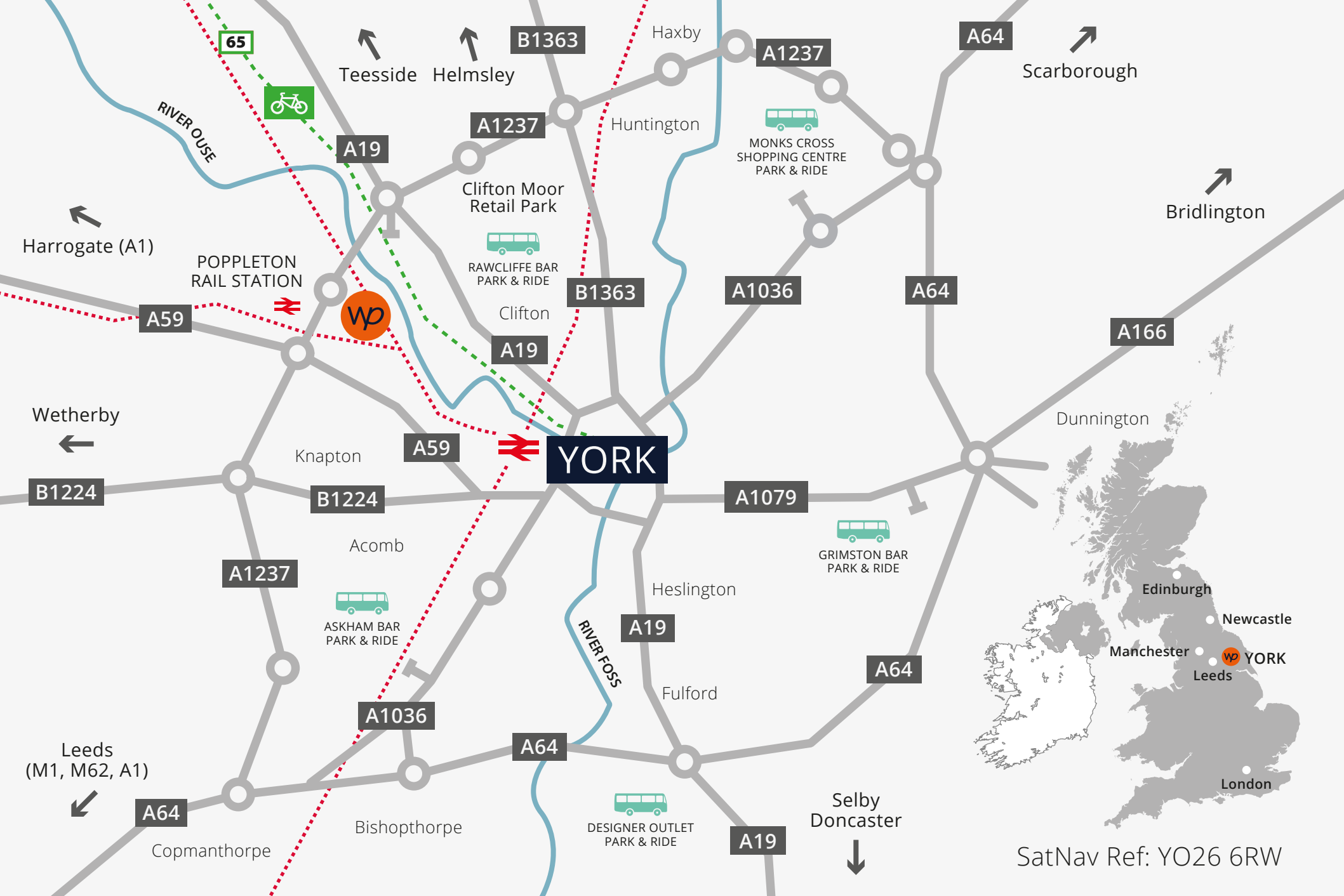
Second Floor:



Third Floor:



Contact the agents for current availability.



Agents:



Matthew Tootell BSc (Hons) MRICS
mt@bowcliffellp.com



Andrew McBeath BSc MRICS
andrew@mcbeathproperty.co.uk

Energy Performance Certificate (EPC): EPC report available on request.

Bowcliffe and McBeath Property Consultancy for themselves and for the vendors or lessor of this property for whom they act, give notice that:- i) these particulars are a general outline only, for the guidance of prospective purchasers or tenants, and do not constitute the whole or any part of an offer or contract; ii) Bowcliffe and McBeath Property Consultancy cannot guarantee the accuracy of any description, dimensions, references to condition, necessary permissions for use and occupation and other details contained herein and prospective purchasers or tenants must not rely on them as statements of fact or representations and must satisfy themselves as to their accuracy; iii) rents quoted in these particulars may be subject to VAT in addition; iv) Bowcliffe and McBeath Property Consultancy will not be liable, in negligence or otherwise, for any loss arising from the use of these particulars; v) the reference to any plant, machinery, equipment, services, fixtures or fittings at the property shall not constitute a representation (unless otherwise stated) as to its state or condition or that it is capable of fulfilling its intended function. Prospective purchasers/ tenants should satisfy themselves as to the fitness of such items for their requirements; vi) no employee of Bowcliffe and McBeath Property Consultancy has any authority to make or give any representation or warranty or enter into any contract whatever in relation to the property. The information contained within these particulars was last verified as at February 2019.

Distance:

1. Edinburgh - 200 miles
2. London - 202 miles
3. Newcastle - 83 miles
4. Manchester - 71 miles
5. Leeds - 25 miles



Westminster Place, York Business Park
Nether Poppleton, York YO26 6RW

westminsterplace.co.uk